



Indukční snímače  
Rectangular housing, IQ20

IQ20-07BPSDP0S



**Typ** > [IQ20-07BSPDP0S](#)  
**Obj. číslo** > [6042043](#)



**At a glance**

- Flat, compact design
- Long sensing distance up to 1.5 mm
- Easily visible indication LEDs
- Available in a metal housing
- Dimensions: 20 mm x 32 mm x 8 mm

**Your benefits**

- Reduced mechanical damage due to space-saving flat housing, which does not protrude from sensor
- Time-saving simple installation with one or two screws
- No restrictions on machine design



**!Features!**

|                           |                                       |
|---------------------------|---------------------------------------|
| Způsob provedení:         | Kvádrový                              |
| Rozměry (Š x V x H):      | 20 mm x 32 mm x 8 mm                  |
| Rozměr světelné stopy Sn: | 7 mm                                  |
| Assured sensing range Sa: | 5,67 mm                               |
| Provedení v kovu:         | Lícovaný                              |
| Spínací frekvence:        | 150 Hz                                |
| Switching output:         | PNP                                   |
| Funkce výstupu:           | NO                                    |
| Elektrické provedení:     | DC 3-vodič                            |
| Krytí:                    | IP 67 <sup>1)</sup>                   |
| Způsob připojení:         | Cable with connector M8, 3-pin, 0,3 m |

<sup>1)</sup> According to EN 60529

**!Mechanics/electronics!**

|                         |                        |
|-------------------------|------------------------|
| Napájecí napětí:        | 10 V DC ... 30 V DC    |
| Zbytkové vlnění:        | ≤ 10 % <sup>1)</sup>   |
| Úbytek napětí:          | < 2,5 V <sup>2)</sup>  |
| Odběr proudu:           | 15 mA <sup>3)</sup>    |
| Zpoždění po zapnutí:    | ≤ 20 ms                |
| Hystereze:              | 1 % ... 15 %           |
| Reprodukovatelnost:     | ± 5 % <sup>4) 5)</sup> |
| Teplotní drift (od Sr): | ± 10 %                 |

|  |                                |
|--|--------------------------------|
| EMV:                                     | Podle EN 60-947-5              |
| Trvalý zatěžovací proud I <sub>a</sub> : | 200 mA                         |
| Materiál vedení:                         | PUR                            |
| Ochrana proti zkratu:                    | ✓                              |
| Ochrana proti přepólování:               | ✓                              |
| Šokové -/vibrační namáhání:              | 30 g, 11 ms/10 ... 55 Hz, 1 mm |
| Teplota okolí provoz:                    | -25 °C ... 70 °C               |
| Materiál krytu:                          | Kov, GD Zn                     |
| Materiál krytu:                          | Umělá hmota, PA12              |

1) Of V<sub>S</sub> 2) At I<sub>a</sub> max 3) Bez zatížení 4) Ub and Ta constant 5) Of Sr

### Reduk ní faktory

---

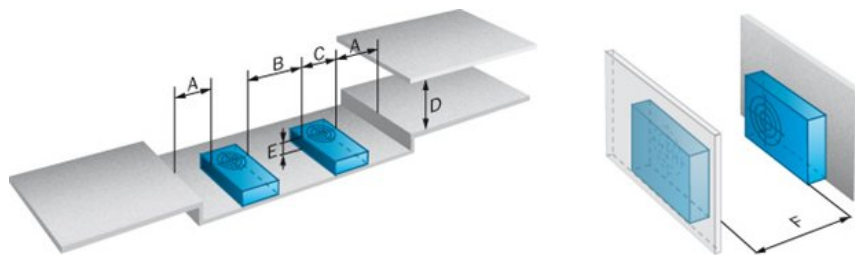
|                             |  |
|-----------------------------|--|
| Note:                       | The values are reference values which may vary |
| Stainless steel (V2A, 304): | Ca. 0,7  |
| Copper (Cu):                | Ca. 0,3  |
| Aluminum (Al):              | Ca. 0,4  |
| Mosaz:                      | Ca. 0,4  |

### Instalace poznámka

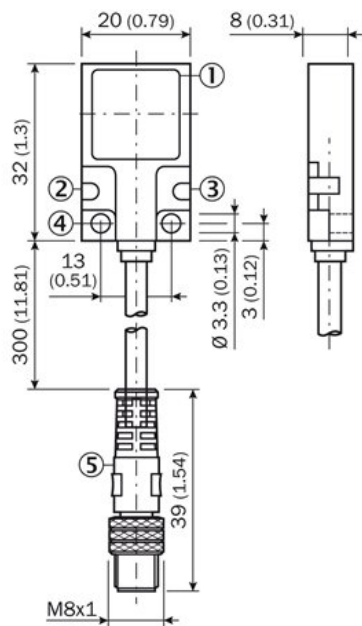
---

|           |                                       |
|-----------|---------------------------------------|
| A:        | 0 mm                                  |
| B:        | 20 mm                                 |
| C:        | 20 mm                                 |
| D:        | 21 mm                                 |
| E:        | 0 mm                                  |
| F:        | 60 mm                                 |
| Poznámka: | Associated graphic see "Installation" |

## Installation note



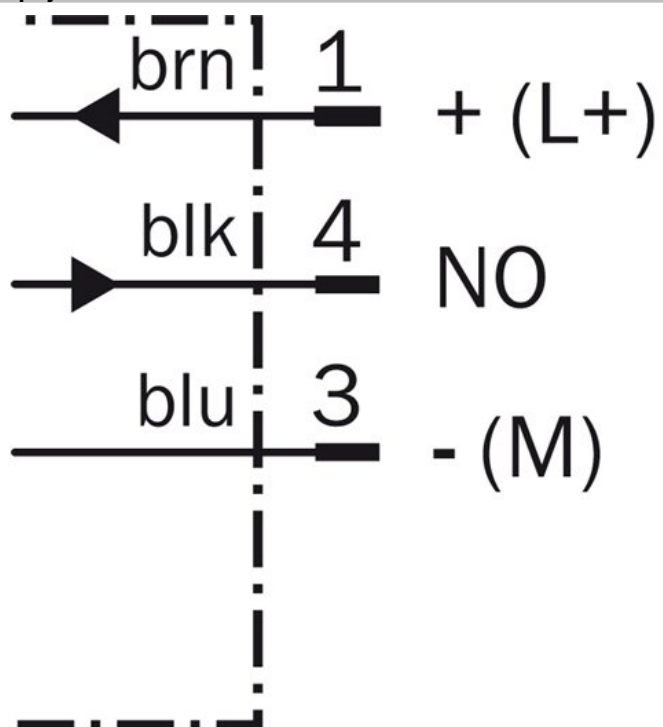
## Dimensional drawing



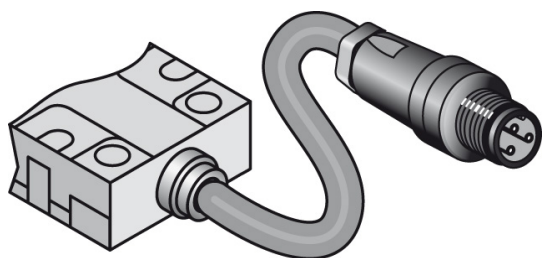
- |1| Sensing face
- |2| Operation status LED, green
- |3| Status LED, yellow
- |4| Mounting hole
- |5| Connection

All dimensions in mm (inch)

Schéma zapojení



Connection type



**Australia**

Phone +61 3 9457 0600  
1800 33 48 02 – tollfree  
E-Mail sales@sick.com.au

**Belgium/Luxembourg**

Phone +32 (0)2 466 55 66  
E-Mail info@sick.be

**Brasil**

Phone +55 11 3215-4900  
E-Mail marketing@sick.com.br

**Canada**

Phone +1 905 771 14 44  
E-Mail information@sick.com

**Česká republika**

Phone +420 2 57 91 18 50  
E-Mail sick@sick.cz

**China**

Phone +86 4000 121 000  
E-Mail info.china@sick.net.cn  
Phone +852-2153 6300  
E-Mail ghk@sick.com.hk

**Danmark**

Phone +45 45 82 64 00  
E-Mail sick@sick.dk

**Deutschland**

Phone +49 211 5301-301  
E-Mail info@sick.de

**España**

Phone +34 93 480 31 00  
E-Mail info@sick.es

**France**

Phone +33 1 64 62 35 00  
E-Mail info@sick.fr

**Great Britain**

Phone +44 (0)1727 831121  
E-Mail info@sick.co.uk

**India**

Phone +91-22-4033 8333  
E-Mail info@sick-india.com

**Israel**

Phone +972-4-6881000  
E-Mail info@sick-sensors.com

**Italia**

Phone +39 02 27 43 41  
E-Mail info@sick.it

**Japan**

Phone +81 (0)3 5309 2112  
E-Mail support@sick.jp

**Magyarország**

Phone +36 1 371 2680  
E-Mail office@sick.hu

**Nederland**

Phone +31 (0)30 229 25 44  
E-Mail info@sick.nl

**Norge**

Phone +47 67 81 50 00  
E-Mail sick@sick.no

**Österreich**

Phone +43 (0)22 36 62 28 8-0  
E-Mail office@sick.at

**Polska**

Phone +48 22 837 40 50  
E-Mail info@sick.pl

**România**

Phone +40 356 171 120  
E-Mail office@sick.ro

**Russia**

Phone +7-495-775-05-30  
E-Mail info@sick.ru

**Schweiz**

Phone +41 41 619 29 39  
E-Mail contact@sick.ch

**Singapore**

Phone +65 6744 3732  
E-Mail sales.gsg@sick.com

**Slovenija**

Phone +386 (0)1-47 69 990  
E-Mail office@sick.si

**South Africa**

Phone +27 11 472 3733  
E-Mail info@sickautomation.co.za

**South Korea**

Phone +82 2 786 6321/4  
E-Mail info@sickkorea.net

**Suomi**

Phone +358-9-25 15 800  
E-Mail sick@sick.fi

**Sverige**

Phone +46 10 110 10 00  
E-Mail info@sick.se

**Taiwan**

Phone +886 2 2375-6288  
E-Mail sales@sick.com.tw

**Türkiye**

Phone +90 (216) 528 50 00  
E-Mail info@sick.com.tr

**United Arab Emirates**

Phone +971 (0) 4 88 65 878  
E-Mail info@sick.ae

**USA/México**

Phone +1(952) 941-6780  
1 (800) 325-7425 – tollfree  
E-Mail info@sickusa.com

More representatives and agencies  
at [www.sick.com](http://www.sick.com)